



# BAYFIELD AREA TRAILS 2024 ANNUAL REPORT



## BAYFIELD AREA TRAILS

### OUR MISSION

Creating a high-quality network of diverse trails within the Bayfield Peninsula.

[bayfieldareatrails.com](http://bayfieldareatrails.com)

In 2024 the Bayfield Area Trails volunteer workforce of more than 60 individuals logged over 3300 hours planning and implementing projects in 16 trail locations between early May and mid-November. An extreme rain event and flooding overnight on [June 19<sup>th</sup> required us to quickly assess trail conditions](#) and implement repairs and improvements toward making trails more durable under high runoff conditions. To be able to address all of these needs and enable volunteers to plan, we established a schedule with standard work days twice per month.

In addition to these ambitious field projects, Bayfield Area Trails Committee (BAT Comm.) members and volunteers started building a longer-term foundation through the Bayfield Peninsula Trails Plan, the Frog Bay Trails Plan, a Trails Feasibility Study that includes a link between

**Standard Work Days**

- Friday & Saturday mornings
- 9am to Noon
- 1st & 3rd weeks of each month

**BAYFIELD AREA TRAILS**

- July 19 & 20 - Brownstone
- Aug. 2 & 3 - Big Ravine
- Aug. 16 & 17 - Pileated Woodpecker
- Aug. 30 & 31 - Big Ravine – Gil Larsen
- Sept. 6 & 7 - Jerry Jolly
- Sept. 20 & 21 - Upper Big Ravine
- Oct. 4 & 5 - Pileated Woodpecker
- Oct. 18 & 19 - Brownstone

#### BAYFIELD AREA TRAILS COMMITTEE MEMBERS

1. Ashwabay Alliance – Chuck Finn
2. Red Cliff Band of the Lake Superior Chippewa – Ashley Huinker
3. Bayfield County – Lindley Mattson
4. City of Bayfield – Fred Clark
5. Landmark Conservancy – Erika Lang
6. Apostle Islands National Lakeshore – Steve Ballou
7. Town of Bayfield – Kate Kitchell (Chair)
8. Town of Bayview (new in 2024) – Mike Bunch
9. Town of Bell – Peter Rothe

Red Cliff and Bayfield, and trail user surveys to inform an Economic Impacts Study of Bayfield Area Trails. To clarify our geographic scope to include the full Bayfield Peninsula and to place more emphasis on community wellbeing and sustainability, a subcommittee revised the [BAT Comm. Mission and Vision and Memorandum of Understanding](#). We welcomed the Town of Bayview as a new signatory of the MOU, providing opportunities to expand volunteerism and collaboration for stewarding the much-loved Houghton Falls Nature Preserve near Washburn.





**OUR VISION**  
Enhancing individual & community wellbeing by connecting people with nature and each other.





## 2024 FIELD PROJECT HIGHLIGHTS

**MAY:** As spring started to show its face in May, volunteers completed two projects: 1) constructing boardwalk at the Big Ravine Headwaters; and 2) cleaning up fallen trees and brush at Frog Bay National Tribal Park. [Read more here.](#)

**JUNE: Trails Celebration:** On June 1<sup>st</sup> & 2<sup>nd</sup> we kicked-off the season with the annual trails celebration on international trails day at the Les Voigt Fish Hatchery & the dedication of the Big Ravine Headwaters viewing platform and trails. [Read more here.](#)



**Flying Squirrel Trail:** On June 7<sup>th</sup> & 8<sup>th</sup>, 8 volunteers added boardwalks, improved drainage, and reroutes to the Flying Squirrel Trail

on the Big Ravine's west side. [Read more here.](#)

**JULY: Jerry Jolly & Siskiwit River Preserve Trails:** July was a very busy time, mostly due to responding to impacts from the big flood of June 19<sup>th</sup> ([read the flood report here](#)). 16 volunteers helped with post-flood clean-up on the Jerry Jolly & Siskiwit River Preserve Trails. [Read more here.](#)



**Brownstone Trail:** On July 18<sup>th</sup> and 19<sup>th</sup>, 10 volunteers made repairs and added water diversions on the Brownstone Trail on the stretch south of the Blue Wing Bay Rd. intersection. [Read more here.](#)

**Big Ravine Headwaters:** Two truckloads of wood chips were transported and spread on the Big Ravine Headwaters woodland trail. [Read more here.](#)



## 2024 FIELD PROJECT HIGHLIGHTS



**AUGUST: *Big Ravine Trails:*** August 2<sup>nd</sup> & 3<sup>rd</sup>, 12 volunteers addressed flood impacts and erosion issues on the Big Ravine's Gil Larsen, Hemlock Heights, & Pine Bluff Trails. [Read more here.](#)

***Upper Pileated Woodpecker Trail:*** On August 16<sup>th</sup> & 17<sup>th</sup>, 7 volunteers prepped the Upper Pileated Woodpecker Trail in advance of mulching the trail with a large Fecon mulcher. They also built water diversions and steps on steeper slopes, and reinforced the footbridge to protect it in high runoff events. [Read more here.](#)





## 2024 FIELD PROJECT HIGHLIGHTS

**SEPTEMBER: Jerry Jolly Overlook:** On September 6<sup>th</sup>, 6 volunteers cleared the lower section of the Jerry Jolly Overlook Loop of logs and a large debris pile deposited during the June 19<sup>th</sup> flood event. [Read more here.](#)

**Upper Big Ravine East & West Sides:** 30 yards of gravel were spread on the Big Ravine's Striped Skunk, Martin, and East Rim Trails by a team of 17 people with tractors & UTV support. [Read more here.](#)



**OCTOBER: Upper Pileated Woodpecker Trail:** On October 4<sup>th</sup>, after a few final touches were completed by 11 volunteers and partners, the Upper Pileated Woodpecker Trail was announced open for use from the Mt. Ashwabay parking lot access. [Read more here.](#)



## 2024 FIELD PROJECT HIGHLIGHTS

**Brownstone Trail:** On October 17<sup>th</sup> and 18<sup>th</sup>, 16 volunteers cleared and prepared the Brownstone Trail and then added gravel and culverts to the section below Wild Rice Retreat. [Read more here.](#)



**NOVEMBER: Houghton Falls Nature Preserve:** In the last project of the season, with support from the Town of Bayview, 15 volunteers transported and spread 30 yards of gravel to refresh worn sections of the trail at Houghton Falls Nature Preserve.



[Read more here.](#)



## SPECIAL PROJECTS – BAYFIELD PENINSULA TRAILS PLAN

With five years of success behind us, we are developing a long-term plan for a sustainable Peninsula-wide silent sports network. The plan will include trail maps, accompanied by narratives that describe goals and priorities for existing and potential new trails. The plan will include a five-year implementation plan that will identify the funding and organizational resources necessary for a sustainable organization.

### Desired Outcomes of the Planning Effort

- Trails inventory & condition assessment of existing trails
- Trail maintenance & improvement priorities for existing trails
- Potential new trail opportunities & priorities
- Resources needed (funding, staffing, etc.)
- A five-year implementation plan to establish a sustainable organization

**The Planning Process:** The plan is being developed with the assistance of the National Park Service Rivers, Trails, and Conservation Assistance Program and a grant from the Apostle Islands Area Community Fund.

### THE PLANNING TEAM

1. Sue Aiken
  2. Fred Clark
  3. Jeff Garrett
  4. Susan Hedman
  5. Kate Kitchell
  6. Mary Ledin
  7. Ted May
  8. Mark Peterson
  9. Peter Rothe
  10. Kathleen Russell
  11. Holly Larson\*
  12. Chris Morgan\*
- \*NPS RTCA

### Outreach to Stakeholders

1. Bayfield County
2. Bayfield, Bayview, and Bell Townships
3. Cities of Bayfield and Washburn
4. National Park Service – Apostle Islands National Lakeshore
5. Red Cliff Band of Lake Superior Chippewa
6. Landmark Conservancy
7. Mt. Ashwabay
8. Bayfield, Cornucopia, and Washburn Chambers of Commerce
9. Biking community
10. Nordic skiing and snowshoeing community
11. ATV and snowmobile community
12. Equestrians
13. Outdoor-oriented businesses
14. Broad public via open house and online survey

### Data gathering (August to November 2024):

The first step has been compiling GIS data and gathering input from key stakeholders to identify opportunities and priorities for existing and potential new trails. This data gathering was accomplished through a series of workshops with over 20 stakeholder groups marking up maps and discussing trail issues, needs, challenges, and opportunities.



### Prioritizing trails & feasibility analysis (October 2024 to March 2025)

This step will include analysis of priorities for existing trails and the feasibility of potential new routes based upon factors such as natural and cultural resources, access, land ownership, land manager capacity, and community support.

**Draft Plan (April 2025):** The goal is to have a draft plan, including extensive maps, available for public review by April 2025. This will include follow-up workshops seeking input from key stakeholders and public open houses.





## SPECIAL PROJECTS – FROG BAY TRIBAL NATIONAL PARK TRAILS PLAN

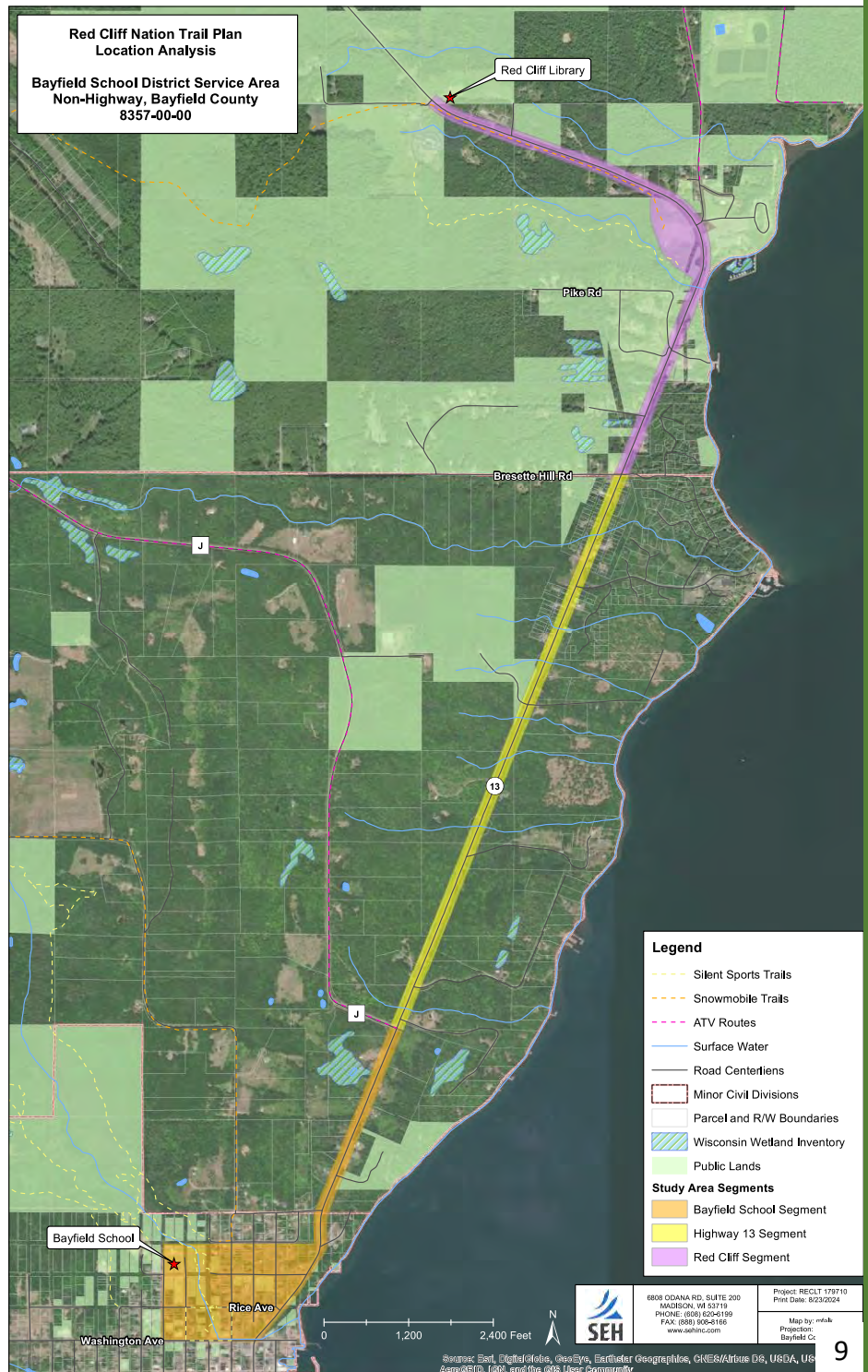
The National Park Service Rivers, Trails, and Conservation Assistance Program is also working with the Red Cliff Treaty Natural Resources Division on a Trails Plan for the Frog Bay Tribal National Park. This plan is assessing the condition of the trails that have been impacted by severe weather events and trail use. It will provide designs and plans to refurbish and enhance the trail system for long-term sustainability.

## SPECIAL PROJECTS – RED CLIFF TO BAYFIELD FEASIBILITY STUDY

The Red Cliff Treaty Natural Resources Department has contracted with SEH Engineering to conduct a feasibility study of the following:

- 1) A paved, non-motorized, ADA accessible trail that will connect the Red Cliff Early Childhood Center and the Red Cliff Ginanda Gikendaasomin Library to the Bayfield School via a trail along Highway 13.
- 2) A paved, non-motorized, ADA accessible trail that will include the connections mentioned above as a minimum and includes additional connections to neighborhoods and community areas in Red Cliff.

The Red Cliff Community has an existing network of non-motorized trails. These trails are not well connected, nor is there adequate capacity to maintain and manage them. The goal of the planning study is to unify the existing system and connect the Red Cliff Community with the City of Bayfield. Establishing a trail connection will reduce the unsafe practice of using the shoulders of Highway 13 and Blueberry Road as bike/pedestrian trails. Funding for this study comes from the Wisconsin Department of Transportation through the federal Transportation Alternatives Program.





# SPECIAL PROJECTS – ECONOMIC IMPACT STUDY & TRAIL USER SURVEYS

**Understanding the value of trails:** Trails across the Bayfield Peninsula are believed to be valuable and attractive for residents and visitors.

1. But how valuable and to how many people?
2. What is the economic impact of trail visitors on local businesses?
3. Should local governments and potential grantors be investing more or less toward trail development?
4. When land use decisions are being considered, can the value of trails be factored into decisions?



**Project Partners:** To help answer these important questions, the Bayfield Area Trails Committee has partnered with the Bayfield Chamber and Visitor Bureau and University of WI - River Falls Survey Research Center to conduct this year-round study that was launched in September 2024. The project is funded by grants from the Wisconsin Coastal Management Program and the Wisconsin Department of Tourism Joint Effort Marketing Program. Implementation is supported by the Town of Bayfield, and Bayfield Area Trails volunteers.

## Survey Locations

Mt. Ashwabay	Big Ravine - Gil Larsen
Brownstone	Big Ravine – Hilltop
North Big Ravine	Frog Bay
Houghton Falls	Jerry Jolly
Lost Creek Falls	Salmo
Siskiwit River Preserve	

**Trail User Surveys:** A central element to the study includes volunteers conducting surveys of adults at 12 trailheads across the Bayfield Peninsula. The 20-question survey takes five-to-ten minutes; it is anonymous and completely optional. [Read more here.](#)

**Role of Volunteers:** Volunteers independently conduct surveys for two hour shifts at the trailhead of their choice. Survey shifts can be scheduled between the hours of 8a and 4p, on

any day of the week. Volunteers sign up on the [Volunteer Dashboard](#), pick up a volunteer kit at a central location, and proceed to the designated trailhead. At the trailhead, volunteers introduce themselves to trail users and ask if they are willing to participate in the survey. If they agree, the volunteer works through the questions using the Jotform app. on their mobile phone. Survey responses automatically upload via Jotform to the UW-River Falls Survey Research Center where the results will be analyzed at the end of the year.

**Volunteer Training:** To get oriented, volunteers are asked to watch a 45-minute-long training video, and download the mobile application. The project coordinator supports volunteers through the onboarding process and an ongoing basis.

**Interested in learning more or volunteering?** Please consider giving it a try! Since launching the surveys in September, 12 individual volunteers completed 48 shifts and completed 158 surveys. More volunteers are needed, especially by the busy summertime when we will need to fill 37 volunteer shifts per month. Most folks find it a rather fun experience. Fill out [Trail Survey Volunteer Sign Up Form](#) to join the mailing list and learn how to get involved; or contact Project Coordinator Hilary Jewell directly at [bayfieldareatrailsvolunteers@gmail.com](mailto:bayfieldareatrailsvolunteers@gmail.com).

## THANK YOU, VOLUNTEERS!

Eve Erickson	Diane Hall
John Hall	Lindy Howe
Genevieve Johnson	Kate Kitchell
Tracy May	Jen Maytum
Renee Meyer	Maureen Rath
Peter Rothe	Kathleen Russell



## 2024 INCOME SUMMARY – FROM BAYFIELD AREA TRAILS COMMITTEE MEMBERS

(Each member administers funds associated with projects and lands within their individual jurisdiction)

PROJECTS	MEMBER/ SPONSOR	FUNDING SOURCES	2024 FUNDING (personnel not included)
Upper Pileated Woodpecker Trail in-kind support – labor and machinery	Ashwabay Alliance	Grants & Donations	\$250 (equipment estimate)
Upper Pileated Woodpecker Trail clearing & drainage work; Siskiwit River Preserve orchard pruning, maintenance & mowing; Lost Creek Falls fencing & signage; Jerry Jolly Overlook Clearing.	Bayfield County	Department of Forestry & Parks Annual Budget	\$2500 (estimate)
Big Ravine Trails: Flying Squirrel rehab. and boardwalks; Hemlock Heights hillside stabilization; Lower Gil Larsen rehab.; Striped Skunk & Martin gravel; replaced signs	City of Bayfield	Parks & Rec. Committee annual budget	\$426
Socioeconomic Impact of Trails Study	Bayfield Chamber & Visitor Bureau	Wisconsin Joint Enterprise Marketing (JEM) Program	\$12,045
Socioeconomic Impact of Trails Study	Town of Bayfield	Wisconsin Coastal Management Program (WCMP) & Town match	\$16,841
Big Ravine Headwaters boardwalk; Upper Big Ravine, Martin & East Rim Trails, gravel & drainage; \$7,360 reserved for Pileated Woodpecker Trail	Town of Bayfield	Grants, Donations, Town ARPA funds	\$3,987
Houghton Falls Nature Preserve Trail rehab., boardwalk, and gravel	Town of Bayview	Town annual budget	\$830
Field project support; World Trails Weekend events; website support; GIS subscription; tool cache expansion.	Bayfield Area Trails General Fund (administered by Fiscal Sponsor – RFR)	Donations	\$5,713
Bayfield Peninsula Trails Master Plan, supported by the National Park Service Rivers, Trails, and Conservation Assistance Program (NPS-RTCA)	Bayfield Area Trails Committee	Duluth Superior Area Community Foundation; NPS-RTCA Technical Assist.	TOTAL: \$30, 355 \$5,000 (grant) \$25,355 (staff & travel, NPS-RTCA team)
Frog Bay Tribal National Park Trails Plan, supported by the National Park Service Rivers, Trails, and Conservation Assistance Program (NPS- RTCA)	Red Cliff Band of Lake Superior Chippewa	NPS-RTCA Technical Assist.	\$2,504 (staff & travel, NPS-RTCA team)
	<b>TOTAL</b>		<b>\$75,451</b>



## 2025 INCOME SUMMARY – FROM BAYFIELD AREA TRAILS COMMITTEE MEMBERS

(Each member administers funds associated with projects and lands within their individual jurisdiction)

PROJECTS	MEMBER/ SPONSOR	FUNDING SOURCES	2025 FORTHCOMING GRANTS & CARRYOVER*
Socioeconomic Impact of Trails Study	Bayfield Chamber & Visitor Bureau	Wisconsin Joint Enterprise Marketing (JEM) Program	\$12,045 (carryover)
Socioeconomic Impact of Trails Study	Town of Bayfield	Wisconsin Coastal Management Program (WCMP) & Town match	\$16,841 (carryover)
Complete Pileated Woodpecker Trail	Town of Bayfield	Grants & Town budget	\$7,360 (carryover)
Trails Feasibility Study, including trail between Red Cliff and Bayfield (initiated in 2024)	Red Cliff Band of Lake Superior Chippewa	TAP Grant (80%); In kind match (20%)	Grant: \$62,500 (carryover)
Complete Bayfield Peninsula Trails Master Plan	Bayfield Area Trails Committee	Duluth Superior Area Community Foundation; National Park Service Rivers, Trails, and Conservation Assistance Program (NPS-RTCA)	\$5,000 (grant) TBD: staff & travel, NPS-RTCA team)
Complete Frog Bay Tribal National Park Trails Plan	Red Cliff Band of Lake Superior Chippewa	National Park Service Rivers, Trails, and Conservation Assistance Program (NPS-RTCA)	TBD: (staff & travel, NPS-RTCA team)
	<b>TOTAL</b>		\$103,746
*Other grants are expected in 2025			

### GENERAL OPERATIONS BUDGET

administered by Recreation & Fitness Resources (RFR) (fiscal sponsor)  
for trail project materials, tool cache, and communications support

#### 2024

Starting balance: \$15,279.70  
 Expenses: \$ 5,650.97\*  
 Ending balance: \$ 9,628.73  
 Donation income: \$12,900.00

##### \* Expenses summary

- Pileated Woodpecker Trail improvements, interpretive signs, & directional signs;
- Annual Trails Celebration;
- Brownstone Trail materials;
- Communications & automation support;
- General materials & tools.

#### 2025 (carryover & donations)

Starting balance: \$22,528.73\*\*

##### \*\*Proposed expenses

- \$7,360 reserved for Pileated Woodpecker Trail repair, trail completion and installation of interpretive signs and trail maps;
- Tool cache expansion;
- Priority projects determined by BAT Committee;
- Communications & automation support: zoom account, website platform & maintenance, GIS subscription.

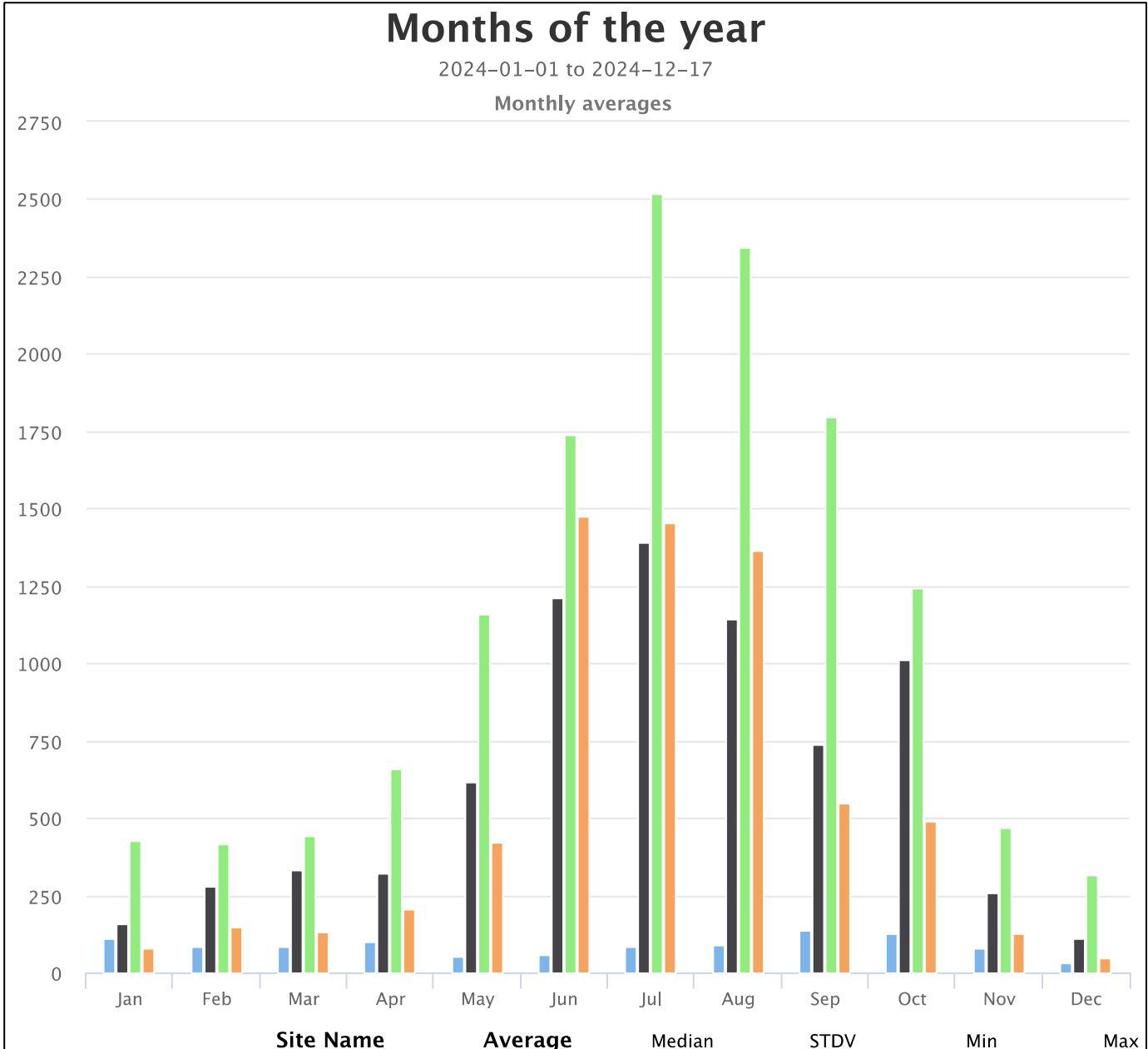


# TRAIL USE STATISTICS

The following statistics are gathered from trail counters at several trailheads. This keeps us informed about use levels and distribution on a daily basis.

- County: Jerry Jolly, Lost Creek Falls, Siskiwit East and West Trails
- City of Bayfield: Big Ravine: Gil Larsen; East Rim Trail – North End\*; Soccer Field/Butterfly\*
- Landmark: Brownstone Trail
- Town of Bayfield: Salmo\*

\*Counters installed in November 2024 – daily totals displayed



Site Name	Average	Median	STDV	Min	Max
Jolly TH (D)	86.9	85.9	28.2	33.1	135.0
Lost Creek Falls TH (D)	630.6	472.0	435.3	111.6	1,392.0
Siskiwit - East Lot (D)	1,127.4	909.0	765.8	316.2	2,519.0
Siskiwit - West lot (D)	541.1	314.3	537.9	49.6	1,477.0

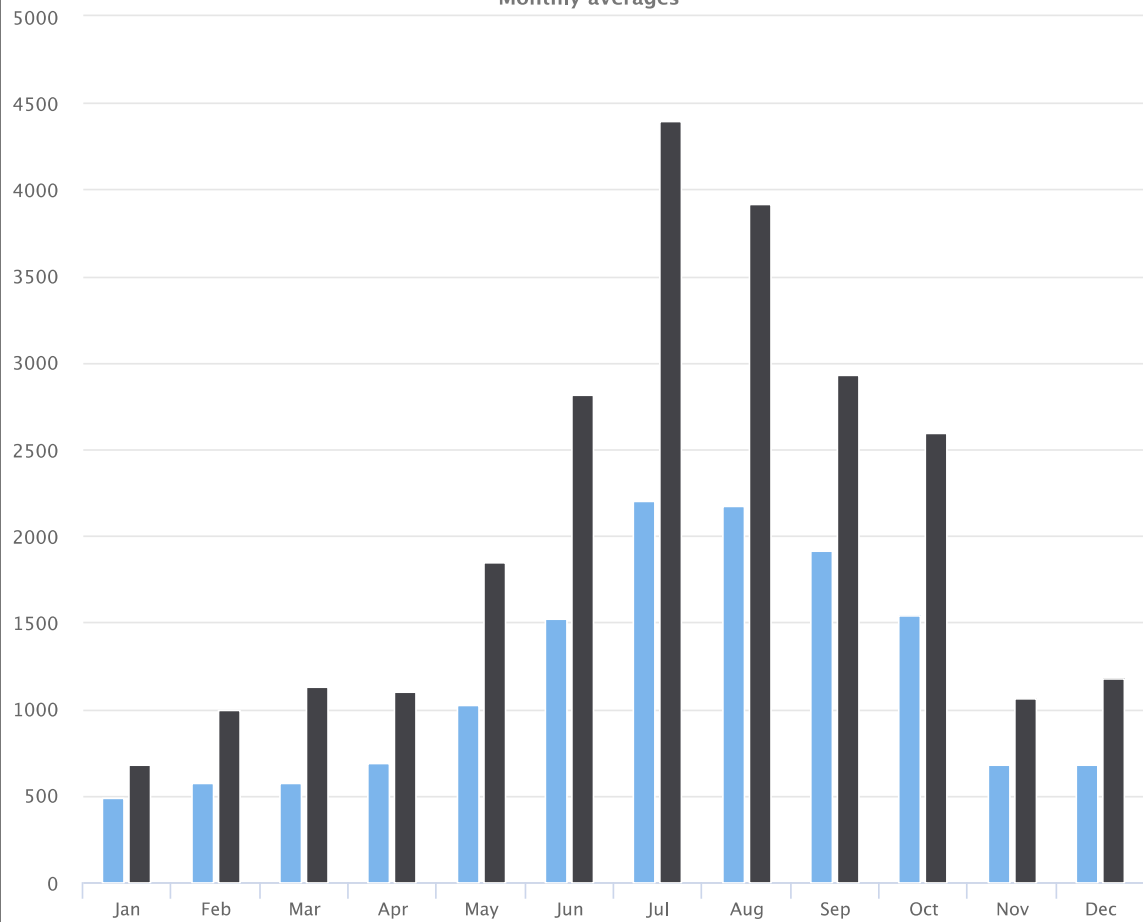
(D) = divide by 2 applied



# Months of the year

2023-10-30 to 2024-11-13

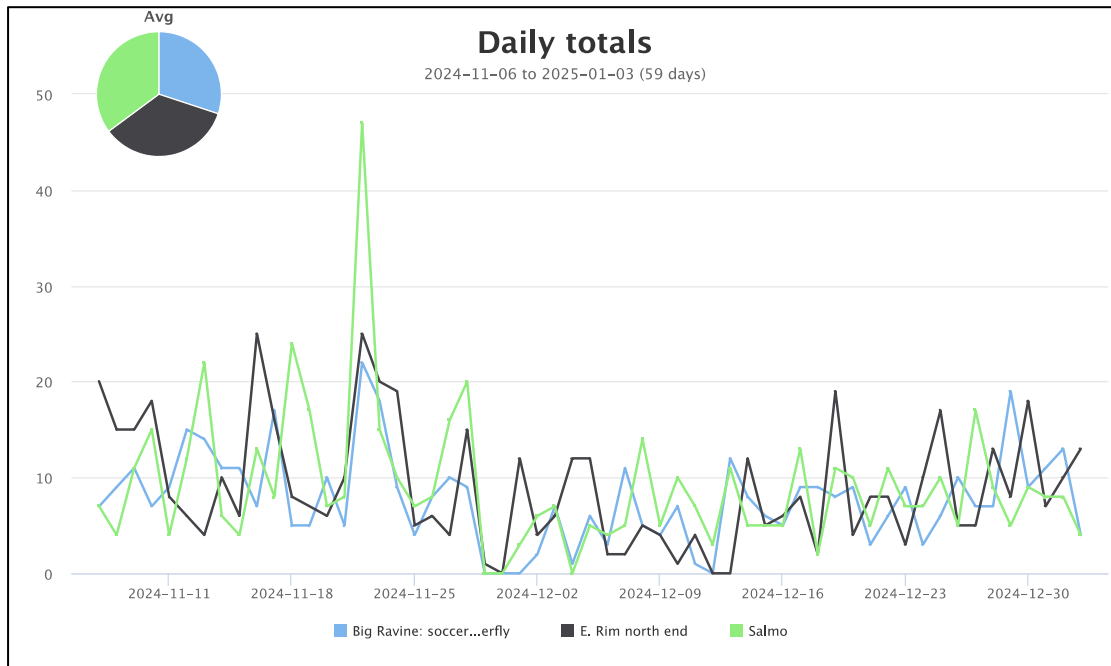
Monthly averages



Site Name	Average	Median	STDV	Min	Max
Big Ravine-Gil Larsen	1,173.0	859.5	631.5	491.0	2,200.0
Brownstone Trail	2,054.1	1,512.5	1,196.0	679.0	4,396.0

# Daily totals

2024-11-06 to 2025-01-03 (59 days)





# TRAILS SUBCOMMITTEE

**The TsC Mission:** To assist with maintaining and enhancing existing trails and developing new trails with the support of our wonderful donors and trail volunteers. To accomplish this, the TsC leads the following activities:

1. Coordinate the Adopt-a-Trail program to monitor trail conditions and conduct basic trail maintenance.
2. Plan and implement volunteer training.
3. Administer volunteer release forms, and maintain a current list of volunteers.
4. Identify project leaders and develop field project plans for projects.
5. Assist with planning and hosting the annual trails forums.
6. Seek volunteer feedback to help improve the volunteer experience and improve trail work

## TsC Members

1. Kris Wegerson (Co-chair)
2. John Ipsen (Co-chair)
3. Genevieve Johnson - Secretary
4. Sue Aiken
5. Jeff Garrett
6. Mary Ledin
7. Paul Kaese
8. Ted May
9. Peter Rothe

TRAIL NAME (Trail Manager Contact)	ADOPTER
<b>BIG RAVINE TRAILS</b> (Contact: City of Bayfield)	
East Rim: Lynde Ave. to Pine Bluff Intersection	Open
East Rim: Pine Bluff Intersection to S End of Finn Loop Intersection	Open
Flying Squirrel	Open
Striped Skunk	Open
Butterfly	Open
Martin Rd: Cemetery to Striped Skunk	Open
<b>N END BIG RAVINE</b> (Contact: Town of Bayfield)	
West Rim: Striped Skunk to north end	Open
West Rim: Overlook Loop	Open
West Rim: Bear Cub	Open
<b>GRACIE'S TRAIL</b> (Contact: Town of Bayfield)	
Betzold to County J	Open
<b>BROWNSTONE TRAIL SEGMENTS</b> (Contact: Landmark)	
Maki Property Foot Trail Detour to Highway 13 to Lakeshore Drive Telegraph Pole	Open
<b>HOUGHTON FALLS</b> (Contact: Town of Bayview)	
Trailhead to Lake	Open
<b>SISKIWIT PRESERVE</b> (Contact: Bayfield County)	
Meadow/Orchard Trails	Open

**Volunteers Needed:** The subcommittee has openings for new members. Please contact them by email if you are interested in joining us: [bats.tsc@gmail.com](mailto:bats.tsc@gmail.com). [Click here for the charter.](#)

## Join the Adopt-a-Trail Program (AAT):

The Trails Subcommittee coordinates an active Adopt-A-Trail program with 30+ trail adopters who monitor and do basic trail maintenance on more than trail sections. Trail adopters visit and maintain their trail sections at least three times during the snow-free season. As time permits, adopters are encouraged to visit trails through the season to maintain good conditions and report issues in a timely manner. Using hand tools, they perform basic trail maintenance. Land managers of trail sections and the TsC are alerted if there is a trail condition that needs urgent attention. We have openings for new adopters! Please contact [bats.tsc@gmail.com](mailto:bats.tsc@gmail.com) if you would like to adopt one or more of the available sections.

## THANK YOU, ADOPTERS!

Sue Aiken	Phil & Sheree Peterson
Lois Albrecht	Brenda & Paul Kaese
Kris & Gordo Anderson	Mike Kinnee & G. Johnson
Bill Bieganek	Kate Kitchell
Bill & Nancy Bussey	Steve Vircsik
Landmark Conservancy	Doreen Conrad
Dave Doering	Ted May
Mark Filonowich	Jen Maytum
Jeff Garrett	Sean Reagan
Diane & John Hall	Peter Rothe
John Ipsen & Kris Wegerson	Cami & Steve Smalley



# COMMUNICATIONS SUBCOMMITTEE

**The CsC Mission:** We “Share” the BATs “Story” using specific “Channels”.

We “Share”:	The “Story”:	Using specific “Channels”:
<ul style="list-style-type: none"> <li>• Communicate/Inform</li> <li>• Educate</li> <li>• Promote</li> <li>• Inspire</li> <li>• Encourage - Involvement</li> <li>• Celebrate</li> </ul>	<ul style="list-style-type: none"> <li>• Stewardship</li> <li>• Sustainability</li> <li>• Community</li> <li>• Play</li> <li>• Work</li> <li>• Volunteerism</li> <li>• Land Conservation</li> <li>• Appreciation</li> </ul>	<ul style="list-style-type: none"> <li>• Website</li> <li>• Social Media</li> <li>• Surveys</li> <li>• Emails</li> <li>• Chamber Blast</li> <li>• Media Releases</li> <li>• Newsletters</li> <li>• Signs</li> <li>• Graphics</li> <li>• Maps</li> <li>• QR Codes</li> </ul>

To date, the CsC has focused on communicating project plans and accomplishments through the [BATs website](#), Facebook, and Instagram and on interpretive signage in the field.

**Expanding activities:** In 2025, we aim to expand in these areas:

- Education and stewardship through field programs
- Trailhead information
- Graphics
- Access to quality maps
- Recruiting volunteers



**Can you help?** With our goals to expand in 2025, we need new members. If you are interested in participating, please contact [bayfieldareatrails@gmail.com](mailto:bayfieldareatrails@gmail.com). To learn more about the CsC, read [the full charter](#) and visit the [bayfieldareatrails.com](http://bayfieldareatrails.com) website.

- CsC Members & Technical Support**
1. Liz Fentress: photos, and blog and Facebook content
  2. Neil Howk: interpretive signage
  3. Kate Kitchell: blog & website content; general coordination
  4. Mark Peterson: photos, and blog, & Facebook content
  5. Tony Jeannette: technical support;



## WHAT LIES AHEAD - 2025 OUTLOOK



### Pileated Woodpecker Trail Access Update

Reestablishing public access upstream from the Les Voigt State Fish Hatchery, including to the Pileated Woodpecker Trail, remains a priority for the Wisconsin DNR, Bayfield Area Trails, and the Town of Bayfield. The DNR and Bayfield County will soon complete a land sale to transfer three small parcels of property from the County to the DNR. This will be the first step toward reestablishing trail access. DNR continues to research the legal status of the abandoned road that had been used for many years for public access. The findings of this research will be pivotal in reestablishing access. The DNR has informed the adjacent landowner of their plans to reestablish access.

**We hope to open at least a foot trail for public access in early 2025.**

Please continue to respect the trail closure until legal public access is reestablished.

Thank you for your cooperation!

### 2025 TRAIL PROJECTS

More TBD prior to field season

#### Maintaining & Enhancing Existing Trails

- Pileated Woodpecker – if reopened, repair bridge, rehab. access trail, and install final maps & interpretive signs.
- Big Ravine Headwaters: smooth rough sections around platform; add bridges & boardwalks in low wet spots.
- Big Ravine: Finalize East Rim gravel & drainage, repair rock armoring on the School Trail.
- Brownstone: install culvert under the trail at the along Blue Wing Bay road intersection.
- Raspberry River Trail: complete brushing & add signage.
- Jerry Jolly Trails: construct connection between the Overlook and the Jolly Long trail.

**Potential Trail Expansion or New Trails:** to be determined through the Bayfield Peninsula Trails Planning process.



### TOOL CACHE EXPANSION IDEAS

(from donations)

- Cordless drill
- Walk-behind string trimmer, blades, & batteries
- Brush cutter, attachments, & batteries
- Folding hand saw
- Loppers
- Digging pry bar
- Small dump trailer
- Wheelbarrow (donated)



## 2025 PROPOSED PRIORITIES

### MAINTAIN AND ENHANCE EXISTING TRAILS

**Continue standard trail work days twice per month.**

**Brownstone Trail:** finalize restoration design; continue fundraising; install culvert under trail at Blue Wing Bay Rd

**Big Ravine Headwaters:** smooth rough sections around platform; add bridges & boardwalks in low wet spots.

**Big Ravine:** finalize East Rim gravel & drainage; repair rock armoring on the School Trail.

**Big Ravine:** if funded, initiate integrated assessment and design for the lower Gil Larsen trail and stormwater management infrastructure.

**Routine maintenance:** conduct routine maintenance after spring field reviews by trail adopters.

**Secure easements** for existing Big Ravine trails.

**Frog Bay Trails:** organize volunteers to assist Red Cliff TNR with spring maintenance.

### DEVELOP NEW TRAILS (with Trails Subcommittee (TsC) support)

**Pileated Woodpecker Trail:** with DNR, restore public access from the Les Voigt hatchery; finish bridge installation; install final directional and interpretive signage.

**Jerry Jolly Trails:** coordinate with Bayfield County to re-establish trail from the "Overlook" to the Jolly Long.

**Big Ravine Sweeny Loop:** work with the City to approve and construct a link from Martin Rd. to end of Chipmunk via Sweeny Ave. R/W.

**Fire Hill:** assist Bayfield County with trails planning and implementation.

### PLAN NEW TRAILS & SECURE ACCESS (working with willing landowners)

**Bayfield Peninsula Trails Plan:** with support from the NPS-RTCA program, complete a long-term plan and the associated 5-year implementation plan.

Support Red Cliff on the TAP-funded feasibility **study of trails, including Red Cliff to Bayfield link.**

**Chequamegon Rd. to Salmo Trail:** pursue possible easements for a public connection to complete the Brownstone Trail.

### COMMUNICATION AND OUTREACH: (with Communications Subcommittee (CsC) support)

**Increase visibility and support** at trailheads and visible locations throughout the Peninsula communities.

**Conduct Trail User Survey and Socioeconomic Study:** complete by October 2025.

**Initiate programs** to promote appreciation and stewardship of the area's resources.

Improve availability of **online map information**, including QR codes, **master map**, and links to other trails.

### BUILD VOLUNTEER CAPACITY

Implement a comprehensive Volunteer Development Initiative to broaden volunteer recruitment, training, and recognition (grant applications being submitted to American Trails, Bayfield County Health, and Apostle Islands Area Community Fund). Collaborate with the Head of the Lake United Way.

### ESTABLISH A SUSTAINABLE ORGANIZATION

**Funding strategy:** based upon the long-term Bayfield Peninsula Trails Plan 5-year implementation plan, develop and initiate a budget and fundraising strategy.

**Leadership succession:** develop and initiate a strategy and action steps to transfer leadership functions.

**Maintain fiscal sponsorship** with Recreation & Fitness Resources. Consider other long-term strategies.

**Organizational structure:** consider options for the Bayfield Area Trails structure such as continuing the current MOU or creating a new 501(c)(3) incorporated nonprofit.

Conduct annual **Trails Forums** to share information and build support

**Policies & procedures:** Document roles, responsibilities of Chair & BAT Comm. procedures in the operations manual to facilitate succession planning. Establish **standard project scheduling & planning:** guidance, checklists, annual cycle



## JOIN US AS A NEW VOLUNTEER IN 2025

[Click here](#) if you want to join.

People who have previously volunteered need not respond.



## DONATE HERE

As a partner in community wellness, Bayfield's Recreation and Fitness Resources (RFR) (FEIN: 42-1706601) receives and administers donations and grants on behalf of Bayfield Area Trails under a fiscal sponsorship agreement.

Online donations can be made at the above link at RFR or you may send a check to Recreation and Fitness Resources, P.O. Box 1146 in Bayfield, WI 54814, Attn. Bayfield Area Trails.

Contact Kate Kitchell, [bayfieldareatrails@gmail.com](mailto:bayfieldareatrails@gmail.com) if you have questions.



**WISCONSIN COASTAL  
MANAGEMENT PROGRAM**



**DULUTH SUPERIOR AREA  
COMMUNITY  
FOUNDATION**

### THANK YOU, DONORS & GRANTS!

- Duluth Superior Area Community Foundation
- Wisconsin Department of Transportation TAP Program
- Wisconsin Coastal Management Program
- Wisconsin Department of Tourism: Joint Effort Marketing Grant Program
- National Park Service Rivers, Trails, and Conservation Assistance Program
- Wild Rice Retreat
- 25 Individual Private Donations
- Bayfield Lumber & Supply for awesome support

**SUPPORTED BY**

**TRAVEL  
WISCONSIN**



# THANK YOU FOR YOUR SUPPORT!



## SEE YOU ON THE TRAIL!